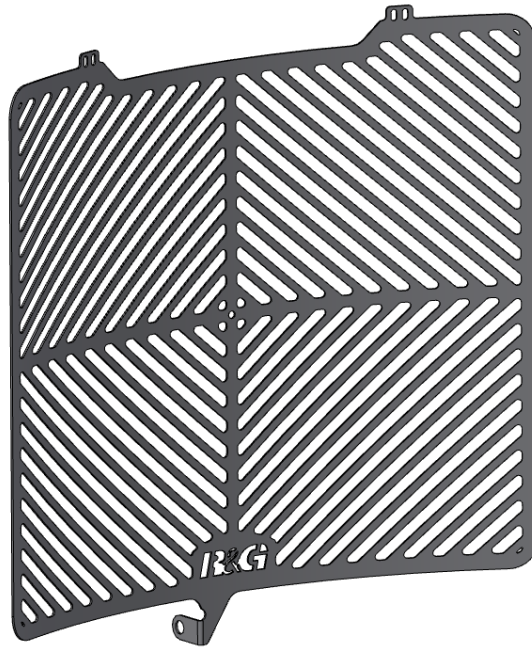




FITTING INSTRUCTIONS FOR SRG0071 STAINLESS RADIATOR GUARD
KAWASAKI NINJA ZX-6R 2019-



THIS KIT CONTAINS THE ITEMS PICTURED AND LABELLED OVER PAGE.

SOME PARTS MAY BE SHOWN FOR CLARITY OF INSTRUCTIONS ONLY.

DO NOT PROCEED UNTIL YOU ARE SURE ALL PARTS ARE PRESENT.

PLEASE READ ALL INSTRUCTIONS BEFORE PROCEEDING.

**IF IN ANY DOUBT WHEN FITTING OUR PRODUCTS, CONSULT ONE OF OUR DEALERS
OR HAVE FITTED BY A QUALIFIED TECHNICIAN.**

PLEASE NOTE THAT THE WAY THE KIT IS PACKED DOES NOT NECESSARILY REPRESENT THE WAY OF
MOUNTING TO THE BIKE.

IN THE EVENT OF RUBBER WASHERS BEING USED TO HOLD COMPONENTS ONTO BOLTS,
THESE RUBBER WASHERS CAN BE THROWN AWAY.

DIGITAL COPIES OF THESE INSTRUCTIONS ARE AVAILABLE FROM:
WWW.RG-RACING.COM

R&G Racing

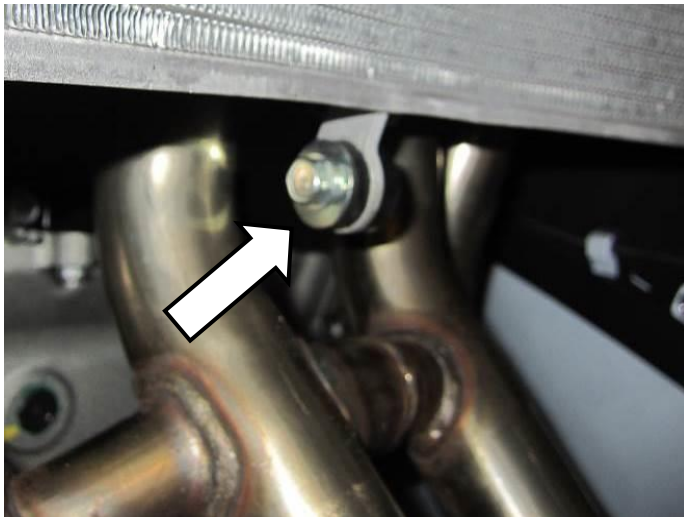
Unit 1, Shelley's Lane, East Worldham, Alton, Hampshire, GU34 3AQ

Tel: +44 (0)1420 89007 Fax: +44 (0)1420 87301 www.rg-racing.com Email: info@rg-racing.com

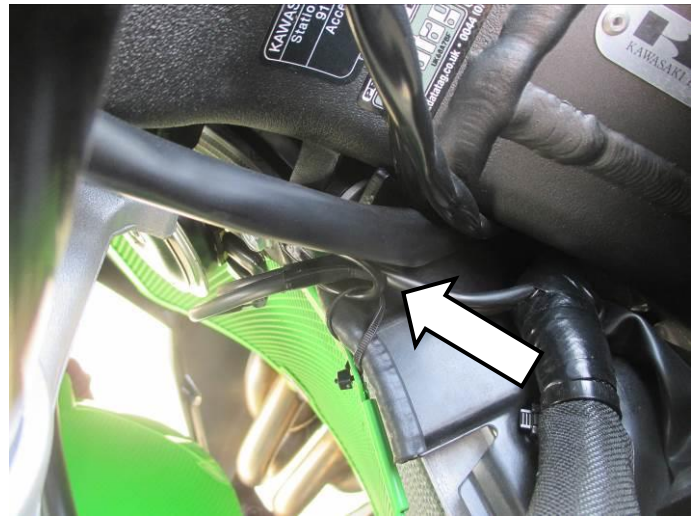


<p><u>TOOLS REQUIRED</u></p> <ul style="list-style-type: none"> · 10mm socket and ratchet 	<p><u>GENERAL TORQUE SETTINGS</u></p> <p>M4 BOLT = 8Nm M5 BOLT = 12Nm M6 BOLT = 15Nm M8 BOLT = 20Nm M10 BOLT = 40Nm M12 BOLT = 40Nm</p>
-----------------------------------------------------------------------------------------------------------------	-------------------------------------------------------------------------------------------------------------------------------------------------------------------------

ITEM No.	DESCRIPTION	QTY
ITEM 1	SS RAD0071 STAINLESS RADIATOR GUARD	1
ITEM 2	100MM LENGTH OF SELF-ADHESIVE FOAM	4
ITEM 3	CABLE TIES	4



PICTURE 1

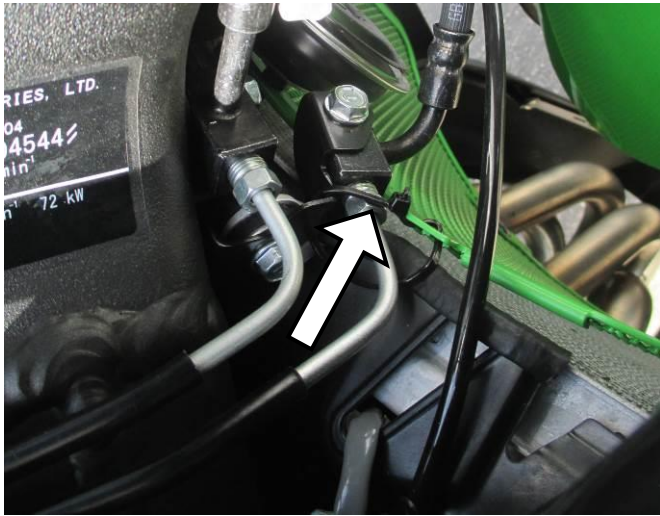


PICTURE 2

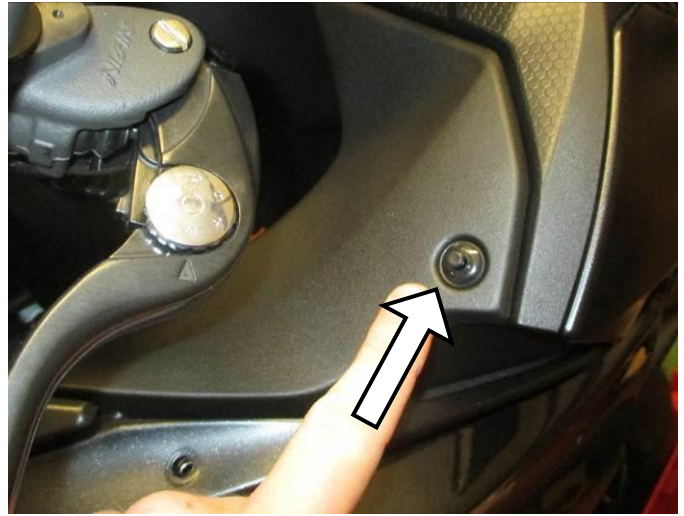
R&G Racing

Unit 1, Shelley's Lane, East Worldham, Alton, Hampshire, GU34 3AQ

Tel: +44 (0)1420 89007 Fax: +44 (0)1420 87301 www.rg-racing.com Email: info@rg-racing.com



PICTURE 3



PICTURE 4

FITTING INSTRUCTIONS

- To fit the radiator guard to the bike, first cut the foam strips provided into 10mm wide pieces and stick evenly spaced to the back of the radiator guard, so that they will sit between the radiator guard and the radiator.
- Remove the lower radiator mounting bolt arrowed in **Picture 1**.
- Offer the radiator guard into position, ensuring that the abs block and any cables are clear of the radiator guard.
- Secure the radiator guard mounting to the lower radiator mount using the original bolt, **do not tighten fully at this stage**.
- Loosely secure the left-hand side cable tie around the cable retaining loop as shown in **Picture 2**.
- Secure the right-hand side cable tie around the abs block mounting bracket as shown in **Picture 3**.
- Fully tighten both cable ties.
- If better access is required to the cable tie mounts, remove the fairing panel arrowed in **Picture 4**.
- Now fully tighten the lower mount bolt to the specified torque and re-fit any removed panels.

ISSUE 1 25/11/2019 (DM)

R&G Racing

Unit 1, Shelley's Lane, East Worldham, Alton, Hampshire, GU34 3AQ

Tel: +44 (0)1420 89007 Fax: +44 (0)1420 87301 www.rg-racing.com Email: info@rg-racing.com



CONSUMER NOTICE

The catalogue description and any exhibition of samples are only broad indications of the Products and R&G may make design changes which do not diminish their performance or visual appeal and supplying them in such state shall conform to the order. The Buyer acknowledges no representation or warranty (other than as to title) has been given or will apply to the Products other than those in R&G's order or confirmation and the Buyer confirms it has chosen the Products as being of merchantable quality and suitable for its particular purposes. Where R&G fits the Products or undertakes other services it shall exercise reasonable skill and care and rectify any fault free of charge unless the workmanship has been disturbed. The Buyer is responsible for ensuring that the warranty on the motorcycle is not affected by the fitting of the Products. On return of any defective Products R&G shall at its option either supply a replacement or refund the purchase money but shall not be liable if the Products have been modified or used or maintained otherwise than in accordance with R&G's or manufacturer's instructions and good engineering practice or if the defect arises from accident or neglect.

Other than identified above and subject to R&G not limiting its liability for causing death and personal injury, it shall not be liable for indirect or consequential loss and otherwise its liability shall be limited to the amounts paid by the Buyer for the Products or the fitting or service concerned. These terms do not affect the Buyer's statutory rights.

R&G RACING RETURNS POLICY (NON-FAULTY GOODS)

Returns must be pre-authorized (if not pre-authorized the return will be rejected). Goods may only be returned direct to us if they were purchased direct from us (customer must prove if necessary). Otherwise to be returned to original vendor. Goods must be in re-sellable condition, in the opinion of R&G Racing. All returns are subject to a 25% restocking and handling fee (25% of the gross value exc. P&P – at the prevailing price at time of purchase). The customer must pay any and all carriage charges. No returns of discontinued products, unless within 14 days of purchase. This policy does not affect your statutory rights and does not refer to faulty goods.

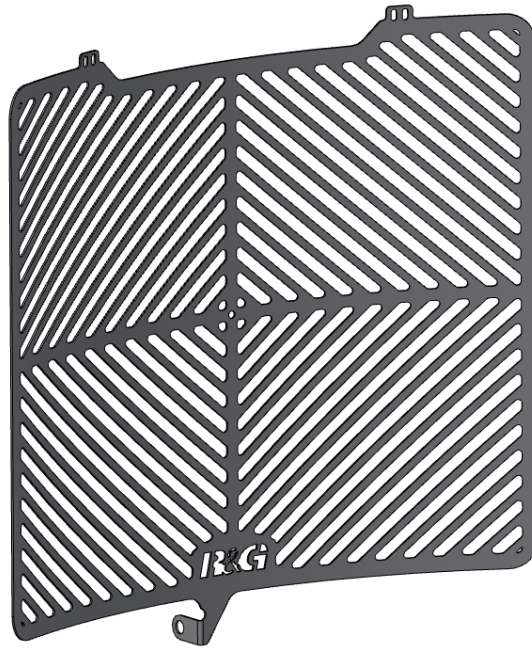
R&G Racing

Unit 1, Shelley's Lane, East Worldham, Alton, Hampshire, GU34 3AQ

Tel: +44 (0)1420 89007 Fax: +44 (0)1420 87301 www.rg-racing.com Email: info@rg-racing.com



**NOTICE DE MONTAGE POUR SRG0071 GRILLE DE PROTECTION
KAWASAKI NINJA ZX-6R 2019-**



LE KIT CONTIENT LES ARTICLES EN PHOTO ET ETIQUETTES SUR LA PAGE

LES PARTIES PRESENTÉES PEUVENT ETRE UNIQUEMENT REPRESENTATIVES POUR LA CLARTE DES INSTRUCTIONS

NE PAS PROCEDER AU MONTAGE AVANT DE VOUS ETRES ASSURE QUE TOUTES LES PIECES SOIENT PRESENTES.

SVP, LIRE L'ENSEMBLE DE LA NOTICE AVANT DE PROCEDER AU MONTAGE.

EN CAS DE DOUTE LORS DU MONTAGE, CONSULTEZ UN DE NOS REVENDEURS, OU FAITES EFFECTUER LE MONTAGE PAR UN TECHNICIEN QUALIFIE

LA FAÇON DONT LE KIT EST EMBALLE NE CORRESPOND PAS FORCEMENT A LA FAÇON DE MONTER LES
PIECES SUR LA MOTO.

NOTEZ QUE SI LES KITS SONT EMBALLES AVEC DES RONDELLES EN CAOUTCHOUC SERVANT A TENIR
LES COMPOSANTS, CES RONDELLES DOIVENT ETRE JETEES.

NOTICE DISPONIBLE AU TELECHARGEMENT SUR :

WWW.RG-RACING.COM

R&G Racing

Unit 1, Shelley's Lane, East Worldham, Alton, Hampshire, GU34 3AQ

Tel: +44 (0)1420 89007 Fax: +44 (0)1420 87301 www.rg-racing.com Email: info@rg-racing.com



<u>OUTILS REQUIS</u>	<u>VALEURS DE SERRAGE</u>
· Clé à cliquet + douille 10mm	M4 BOULON = 8Nm M5 BOULON = 12Nm M6 BOULON = 15Nm M8 BOULON = 20Nm M10 BOULON = 40Nm M12 BOULON = 40Nm

ARTICLE No.	DESCRIPTION	QTE
ARTICLE 1	SS RAD0071 GRILLE DE PROTECTION RADIATEUR	1
ARTICLE 2	100MM LONGUEUR DE MOUSSE AUTOCOLLANTE	4
ARTICLE 3	COLLIERS DE SERRAGE	4

NOTICE DE MONTAGE

- Pour installer la protection radiateur sur la moto, coupez d'abord les bandes de mousse fournies en morceaux de 10 mm de large et collez-les à l'arrière de la protection radiateur, de sorte qu'elles se placent entre la protection radiateur et le radiateur.
- Retirez le boulon de fixation du radiateur inférieur fléché sur la photo 1.
- Mettez le protecteur de radiateur en place, en vous assurant que le bloc abs et les câbles soient éloignés de la grille de protection.
- Fixez le support de protection radiateur au support de radiateur inférieur à l'aide du boulon d'origine, ne serrez pas complètement à ce stade.
- Fixez sans serrer l'attache de câble gauche autour de la boucle de retenue du câble, comme illustré sur la photo 2.
- Fixez le collier de serrage côté droit autour du support de montage du bloc abs comme indiqué sur la photo 3.
- Serrez complètement les deux colliers de serrage.
- Si un meilleur accès est nécessaire aux supports de colliers de serrage, retirez le panneau de carénage fléché sur la photo 4.
- Serrez maintenant complètement le boulon de montage inférieur au couple spécifié et remettez en place tous les panneaux retirés.

ISSUE 1 25/11/2019 (DM)

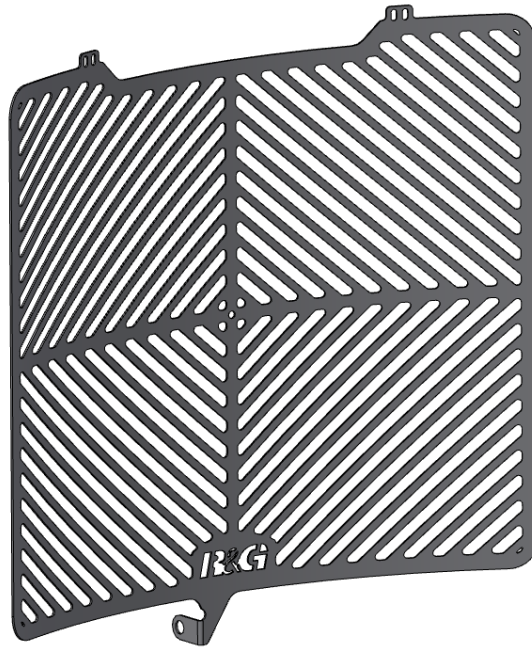
R&G Racing

Unit 1, Shelley's Lane, East Worldham, Alton, Hampshire, GU34 3AQ

Tel: +44 (0)1420 89007 Fax: +44 (0)1420 87301 www.rg-racing.com Email: info@rg-racing.com



MONTAGEANLEITUNG FÜR SRG0071 KÜHLERSCHUTZ
KAWASAKI NINJA ZX-6R 2019-



ALLE KIT-TEILE SIND AUF DEN FOLGENDEN SEITEN ABGEBILDET UND GEKENNZEICHNET.

DIE ABGEBILDETEN TEILE DIENEN LEDIGLICH ZUR ERKLÄRUNG.

ÜBERPRÜFEN SIE ZUERST, DASS ALLE TEILE VORHANDEN SIND.

LESEN SIE DIE MONTAGEANLEITUNG KOMPLETT DURCH, BEVOR SIE ANFANGEN.

WENN SIE BEI DER MONTAGE DIESES PRODUKTES UNSICHER SIND, BITTE EINEN UNSERER HÄNDLER KONTAKTIEREN ODER DAS KIT VON EINEM QUALIFIZIERTEN ZWEIRAD-MECHANIKER MONTIEREN LASSEN.

DIE VERPACKUNG DER TEILE STELLT NICHT DIE REIHENFOLGE DER MONTAGE DAR.
HINWEIS FÜR KITS MIT PLASTIKUNTERLEGSCHLEIBEN AN DEN SCHRAUBEN –
DIESE PLASTIK-UNTERLEGSCHLEIBEN WERDEN NICHT FÜR DEN EINBAU BENÖTIGT!

EINE DIGITALE VERSION DIESER MONTAGEANLEITUNG KANN AUF FOLGENDER SEITE HERUNTERGELADEN WERDEN:

WWW.RG-RACING.COM

R&G Racing

Unit 1, Shelley's Lane, East Worldham, Alton, Hampshire, GU34 3AQ

Tel: +44 (0)1420 89007 Fax: +44 (0)1420 87301 www.rg-racing.com Email: info@rg-racing.com



<p><u>SIE BENÖTIGEN FOLGENDES WERKZEUG</u></p> <p>· 10mm Steckschlüssel</p>	<p><u>ALLGEM. ANZUGSDREHMOMENT</u></p> <p>M4 SCHRAUBE = 8Nm M5 SCHRAUBE = 12Nm M6 SCHRAUBE = 15Nm M8 SCHRAUBE = 20Nm M10 SCHRAUBE = 40Nm M12 SCHRAUBE = 40Nm</p>
------------------------------------------------------------------------------------	--------------------------------------------------------------------------------------------------------------------------------------------------------------------------------------------------

ARTIKEL NR.	BESCHREIBUNG	MENGE
ARTIKEL 1	SS RAD0071 KÜHLERSCHUTZ	1
ARTIKEL 2	100MM SELBSTKLEBENDER SCHAUMSTOFFSTREIFEN	4
ARTIKEL 3	KABELBINDER	4

MONTAGEANLEITUNG

- Um den Kühlerschutz montieren zu können, schneiden Sie zuerst die mitgelieferten Schaumstoffstreifen in 10 mm breite Streifen und kleben Sie diese auf der Rückseite des Kühlerschutzrahmens, so dass sie zwischen dem Kühlerschutz und dem Kühler angebracht sind.
- Entfernen Sie die untere Montageschraube für den Kühler, die in **Abbildung 1** gekennzeichnet ist.
- Den Kühlerschutz in Position bringen, und darauf achten, dass der ABS-Block und die Kabel den Kühlerschutz nicht berühren.
- Benutzen Sie die Originalschraube, um die Kühlerschutz-Halterung an der unteren Kühlerhalterung zu fixieren - **zu diesem Zeitpunkt nicht festziehen.**
- Den Kabelbinder für die linke Seite lose um die Halterung für die Kabel binden – siehe **Abbildung 2.**
- Sichern Sie den Kabelbinder für die rechte Seite um die Halterung für den ABS-Block wie in **Abbildung 3** abgebildet.
- Ziehen Sie beide Kabelbinder fest.
- Falls Sie einen besseren Zugang zu den Montagehalterung für die Kabelbinder benötigen, entfernen Sie das in **Abbildung 4** markierte Verkleidungsteil.
- Ziehen Sie nun die untere Montageschraube mit dem entsprechenden Anzugsdrehmoment fest und montieren Sie alle entfernten Verkleidungsteile wieder.

AUSGABE 1 25/11/2019 (DM)

R&G Racing

Unit 1, Shelley's Lane, East Worldham, Alton, Hampshire, GU34 3AQ

Tel: +44 (0)1420 89007 Fax: +44 (0)1420 87301 www.rg-racing.com Email: info@rg-racing.com